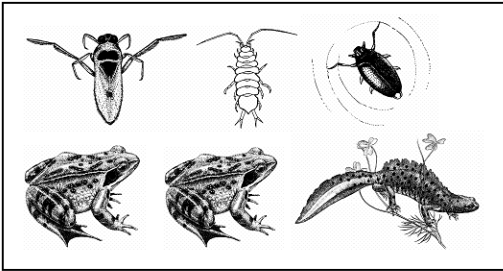


Pond Life Brainteaser

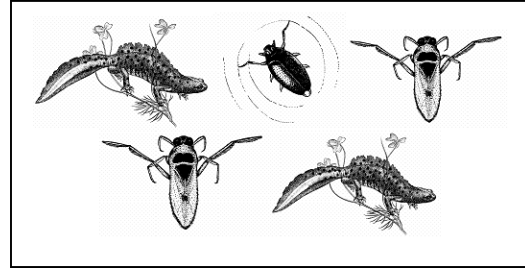
The reserve staff have been out surveying the pond life found in various ditches at Castle Water. Can you help them by putting their information into bar charts so they can see how many different creatures there are at each site?

In the boxes below you will see a number of different creatures from each ditch surveyed.

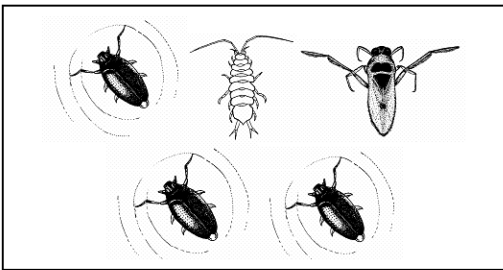
Site 1



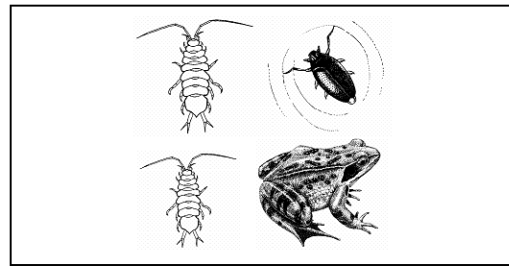
Site 2



Site 3



Site 4



Now Make a Bar Chart

Don't forget to add a title and label the axis.

For each site cross off a creature. Each time you cross off a creature, colour it in a box on your bar chart

1. Which site has the most Great Crested Newts?

.....

2. How many creatures are there all together?

.....

3. Which is the most abundant creature in total?

.....

4. Which is the best site for creatures and why?

.....

Pond Life Key:

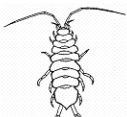
Water Boatman



Great Crested Newt



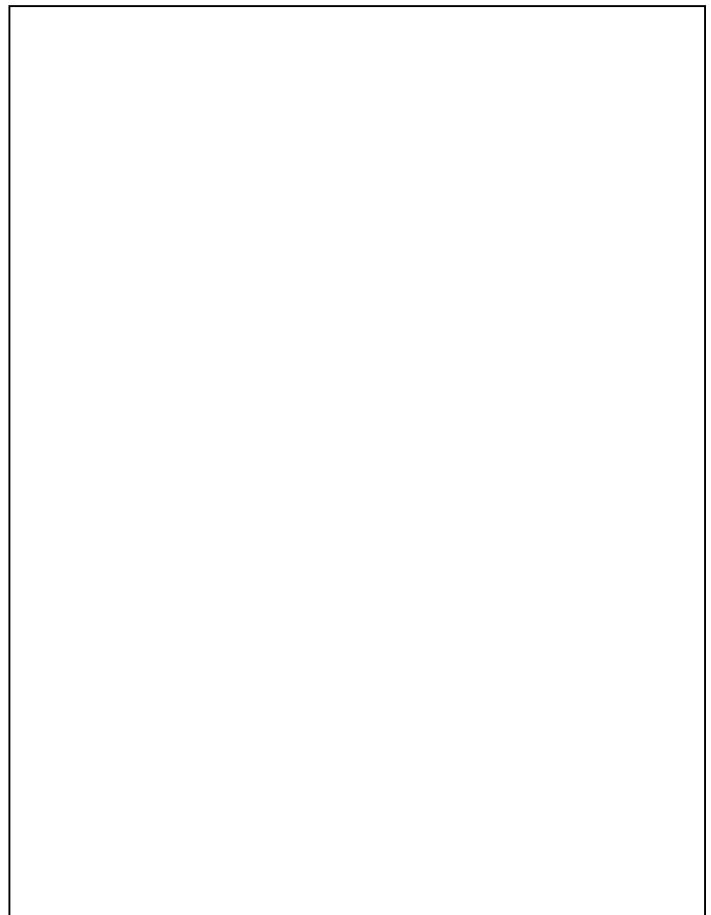
Marsh Frog



Water Louse



Whirlygig Beetle

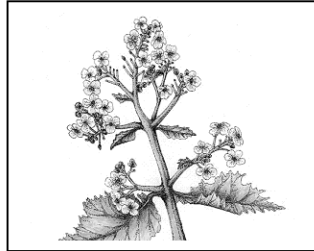


Seed Survivors

The plants that live on shingle beaches grow lots of seeds. Not all of the seeds that are produced grow into new plants. Some do not form properly, some do not land in a good place to grow and lots of them are eaten by birds and insects. This is why plants produce lots of seeds.

A Sea Kale produces 200 seeds. A greenfinch comes along and eats half of them.
How many are left?

.....



A Yellow Horned Poppy produces 320 seeds. Only a quarter grow into young plants.
How many young plants are there?

.....



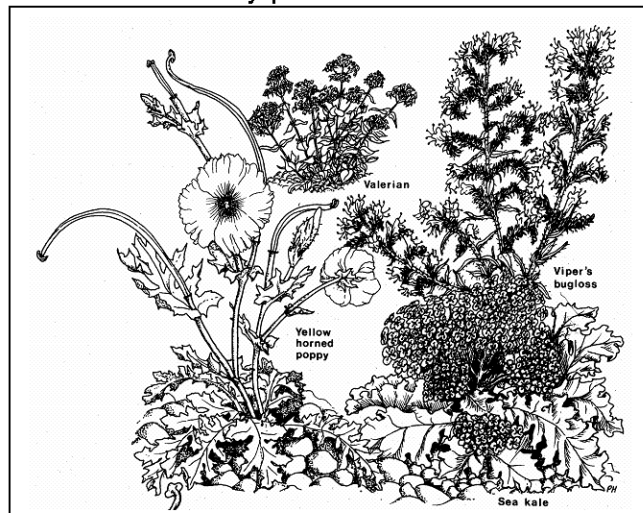
A Viper's Bugloss produces 100 seeds. Only half of these germinate (start to grow),
only a further half of these seeds grow into young plants.
How many young plants are there?

.....



There are seven Yellow Horned Poppy Plants, three Viper's Bugloss plants and five Sea Kale plants.
A huge wave comes and washes two of the Sea Kales,
one Viper's Bugloss and three Yellow Horned Poppy plants away.
How many plants are left?

.....

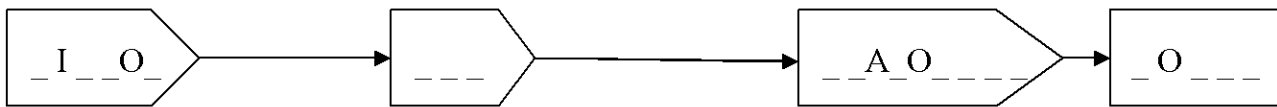
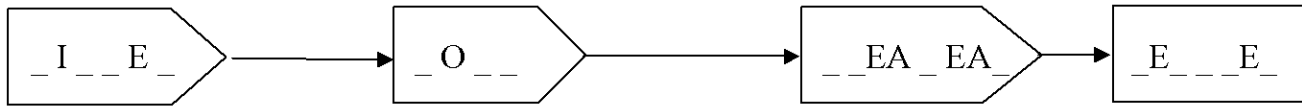
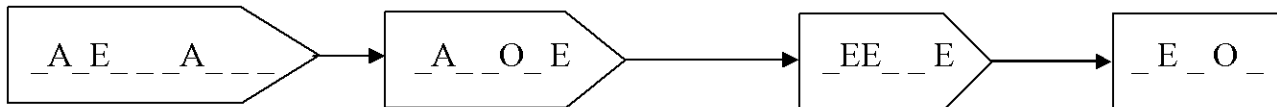
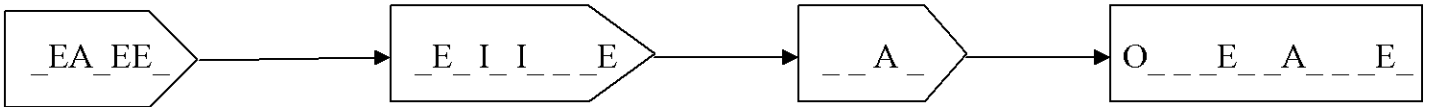
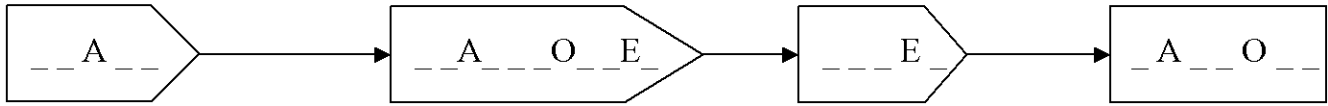


Food Chain Mystery

Only the vowels are showing in these food chains.

Fill in the blanks to complete the food chains.

Primary Producer → *Primary Consumer* → *Secondary Consumer* → *Top Predator*



- | | | | | | |
|---------------|--------|-------------|-------|-----------|---------|
| Oystercatcher | Willow | Barn Owl | Grass | Wheatear | Moorhen |
| Duckweed | Beetle | Periwinkle | Moth | Dragonfly | Mink |
| Water Snail | Shrew | Grasshopper | Crab | Seaweed | Kestrel |
| Water Plants | Heron | Lichen | Fly | Tadpole | Hobby |