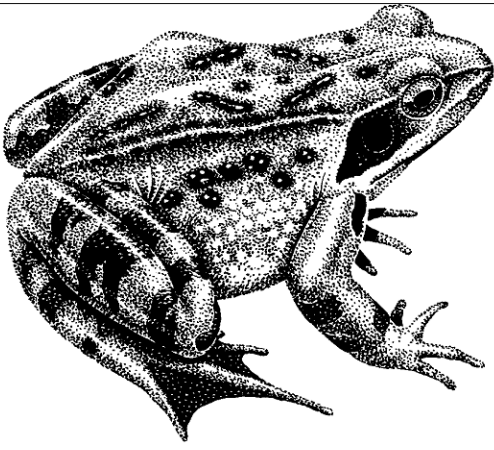
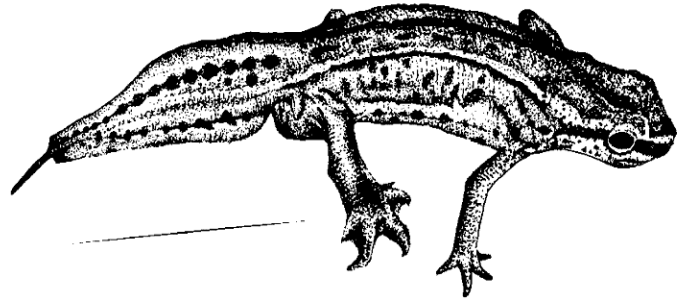


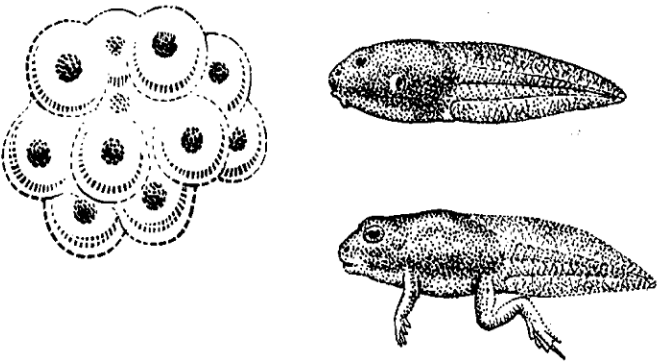
What's in the bucket?



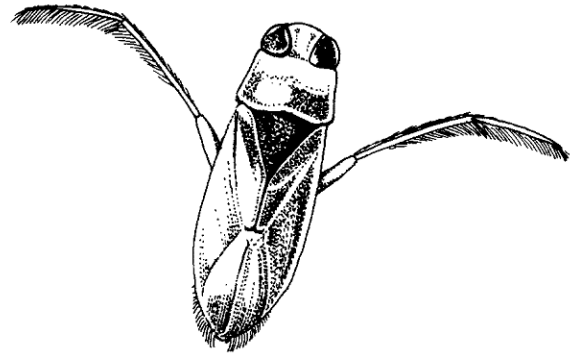
Frog



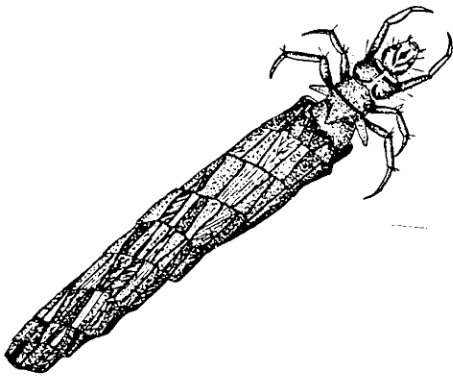
Newt



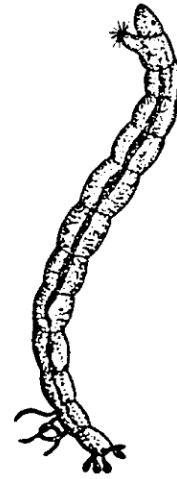
Tadpole



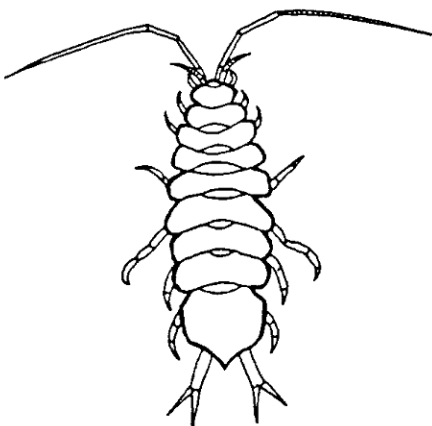
Waterboatman



Caddis fly larvae



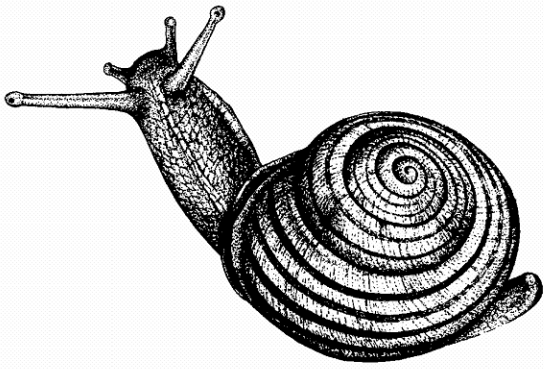
Bloodworm



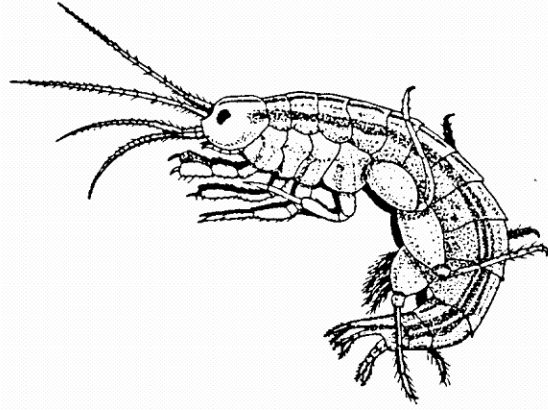
Water Louse



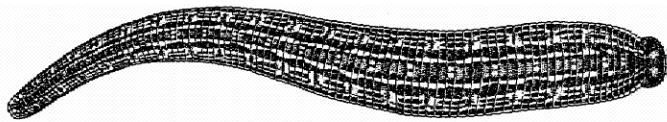
Water Beetle



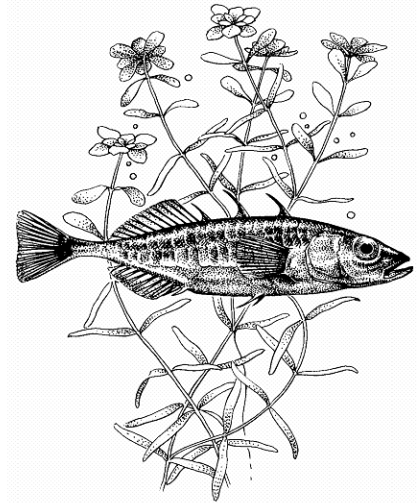
Pond snail



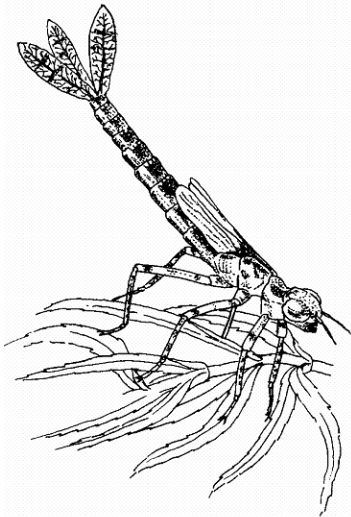
Freshwater Shrimp



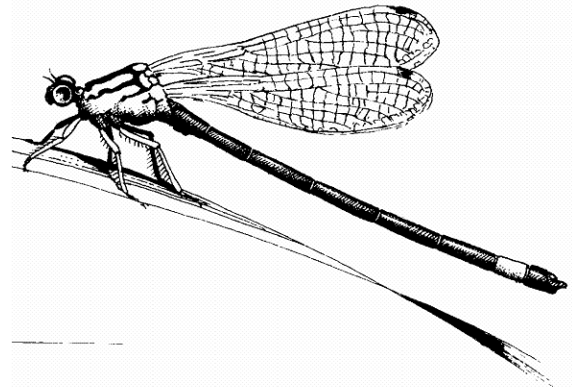
Leech



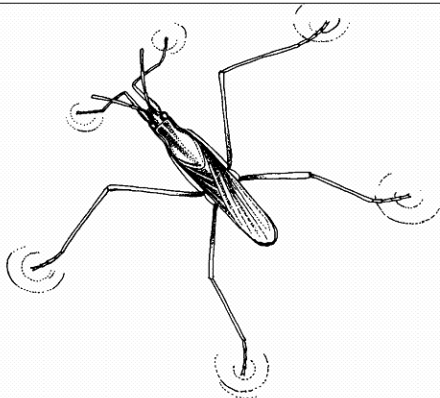
Fish



Dragonfly larvae



Dragonfly and Damselfly



Pond Skater

We have also seen....

- 1.
- 2.
- 3.
- 4.

Hidden in Ponds and Ditches

F	R	O	G	J	R	D	G	A	E	H	E
R	I	T	E	N	B	D	T	J	S	D	A
E	S	N	A	C	M	R	O	I	E	R	V
S	N	A	A	D	G	A	F	R	L	A	R
H	D	M	C	V	P	G	W	P	T	G	A
W	A	T	E	R	L	O	U	S	E	O	L
A	M	A	B	E	C	N	L	Y	E	N	Y
T	S	O	L	T	H	F	J	E	B	F	L
E	E	B	O	A	Y	L	W	E	R	L	F
R	L	R	O	K	T	Y	T	M	E	Y	S
S	F	E	D	S	R	W	L	P	T	L	I
H	L	T	W	D	E	W	D	S	A	A	D
R	Y	A	O	N	M	N	Q	A	W	R	D
I	X	W	R	O	L	E	E	C	H	V	A
M	T	R	M	P	D	E	T	H	Z	A	C
P	O	N	D	S	N	A	I	L	E	E	Y

Can you find all these creatures that live in ponds and ditches?

Water Louse
Dragonfly
Pond Snail
Damselfly

Caddis Fly Larvae
Freshwater Shrimp
Dragonfly Larvae
Water boatman

Fish
Leech
Tadpole
Newt

Water Beetle
Bloodworm
Pond Skater
Frog