



NEWSLETTER

The Friends of Rye Harbour Nature Reserve

c/o. 1 Coastguard Cottages, Rye Harbour, Rye, East Sussex,

TN31 7TS.

Telephone: Rye (0797) 223862

A registered charity founded in 1973 to aid in the establishment and maintenance of the Nature Reserve within the Rye Harbour Site of Special Scientific Interest, (known as the SSSI).

CHAIRMAN: Ian Runley-Dawson. VICE CHAIRMAN: Clifford Percival. TREASURER: Pat Bonham.
SECRETARY: Miss Liz Blackwell. MEMBERSHIP SECRETARY: Peter Philpot.
COMMITTEE: Steve Denny, Bob Greenhalf, Peter Greenhalf, Frank Palmer, Mrs. Anne Yates,
Dr. Barry Yates.

SUMMER - AUTUMN 1985

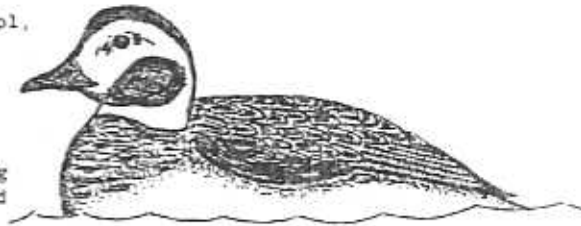
NUMBER 21

WARDEN'S REPORT.

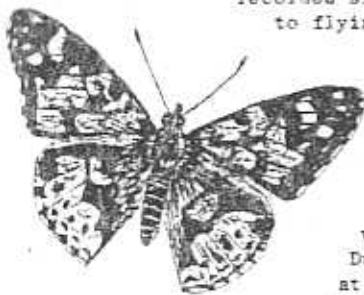
Dr. Barry Yates.

The weather continues to be a major topic of conversation on the Reserve, with extended periods of cold, wet and windy weather throughout the spring and summer. It seems impossible for any of the animals to have had a successful breeding season, but some did.

Great Crested Grebe - the only successful pair was on Ternery Pool, where they raised 2 young (for the first time there). Little Grebe - only found on Ternery Pool, with 5 pairs raising about 11 young. Tufted Duck - 8 broods appeared on the Pool and 20 young survived to fly. One brood was cared for by a female Mallard! Oystercatcher - 20 pairs nested on the Beach Reserve with good hatching success, but only 8 young were raised. During bad weather in June at least 2 pairs deserted their eggs. Ringed Plover - 51 pairs nested (the most ever recorded on our Reserve) and because of their long breeding season, and ability to replace lost clutches or young, they produced a great number of young to the flying stage, perhaps 75. Lapwing - around 25 pairs nested on the Beach Reserve, but despite good hatching success, they reared less than 10 young. Redshank - 15 pairs produced young on the Beach Reserve, and most raised some to flying, totalling about 25. Sandwich Tern - no nesting this year and far fewer adults around all summer. Common Tern - this year all nesting attempts were concealed on the large island at the east end of Ternery Pool. These were estimated at 60-70 pairs producing around 1 young per pair. Little Terns - the largest population recorded since the Reserve was established, 76 pairs, but they raised only 10-12 young to flying. Most nest losses were attributed to roosting large gulls and many chicks were taken by a Kestrel breeding in Camber Castle. These losses were exaggerated by the poor weather that made fishing very difficult for the adults. Sand Martins - local birds were absent until 18th June when 1 pair established a nest at the artificial bank, and successfully bred. Wheatear - only 7 pairs nested but, amazingly, all produced 4 or 5 young despite the weather.



Long-tailed Duck



Painted Lady Butterfly

Other birds of note were - the first record for the Reserve of Little Egret which was briefly seen on the river on 18th April and later reported at Dungeness; a single immature female Long-tailed Duck stayed from 27th May until at least 17th August; and a female Marsh Harrier seen regularly from 24th July until 12th August.

The autumn migration has so far been disappointing with the exception of a flock of 56 Curlew Sandpipers in mid-August.

Birds apart, the summer was most memorable for the large numbers of Painted Lady Butterflies that was the commonest species throughout May and early June, and was frequently seen battling against gale force winds.

(Drawings here by Barry Yates)

WORK PARTY.

Barry Yates.

Sunday, 29th September 1985, to include island enlargement and weeding, and landscaping of the new Wader Pool. Meet at 10am at the Information Centre, and bring lunch, rubber boots, work gloves, plus any other useful gardening tools such as rakes or spades, etc.. If you care to come later in the afternoon, then please meet out on the Reserve where work will be going on.

PETT LEVEL COFFEE MORNING.

Liz Blackwell.

Yellow
Horned
Poppy

This Coffee Morning was well attended by Friends, their friends and members of the public at Broadlands, home of Bernard and Diana Flack, at Pett Level one Saturday at the end of June.

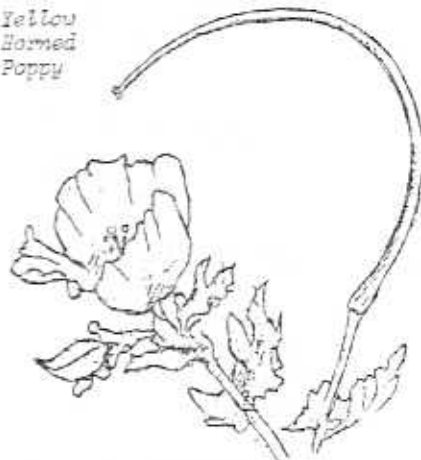
Their spacious bungalow provided an excellent setting for the stalls of bring-and-buy, cakes, children's dresses, games, plants, tombola and of course membership with Reserve sales goods. The children enjoyed chasing the semi-tame wild rabbit round the garden which is so peacefully set with trees and a waterfall.

An intrepid group followed the Nature Trail up over the cliffs and down through Marsham Valley, noting all the points of wildlife interest along the way.

Nearly £200 was added to the funds of the Friends of Rye Harbour Nature Reserve. Thanks are due to all who attended, to those who worked so hard to make it a success and in particular to our hosts for allowing us to devastate their home that day.

If you would like to hold a Coffee Morning on behalf of the Friends, to help raise our funds, then please contact the Committee (see Newsletter heading), and we will be happy to help you and or give advice. Thank you.

(Drawings on this page by Viv Cecil)



.....
GUIDED WALKS FOR MEMBERS OF THE FRIENDS.

These will depart at 10am from the Information Centre in the Martello Tower carpark. Bring suitable outdoor clothing including rubber boots, as well as lunch and binoculars. Dates are as follows:-

Saturday 19th October 1985.

Sunday 1st December 1985.

.....
WADER POOL.

Anne & Barry Yates.

Very many thanks to all of you that supported the raffle for this project, it raised almost \$1,500 and will enable the Friends to make a good job of the Pool, with the added advantage of getting the most powerful electric fence unit.

The winning ticket was drawn at a packed Annual General Meeting in the Winchelsea Beach Village Hall, and so the quilt was won by Mrs. Walker of Oxted. 19 other prizes were also won.

Already the area for the Pool has been levelled and retaining embankments positioned. Into this the Southern Water Authority has deposited 440 lorry loads of river mud. This immediately attracted many broods of Redshank, Ringed Plover and Oystercatcher. When these had flown, it was then possible to start landscaping the area and to date there is a section of shallow water about a fifth of the Pool size. It is proving very attractive to waders, holding up to 7 Common Sandpipers, 20 Dunlin, and single Greenshank, Whimbrel, Snipe and Little Stint. The Pool has also been visited by Shelduck and Teal.

.....
RESERVE SALES ITEMS.

The 1984 Annual Report is now available and contains over 70 pages, packed with details of a most exciting year. It costs \$1 (plus 22p postage, please send a LARGE self addressed envelope).

A new car sticker is now available, featuring a flying Little Tern on a blue background, with the words RYE HARBOUR NATURE RESERVE. Price 50p (plus postage).

Both of these items are available from the Warden, see address in Newsletter heading.

.....
FUND-RAISING EVENT.

Ian R-D.

Each autumn the Friends hold a public event not only to raise funds for the Reserve, but also to attract new members and to make more people aware of the valuable part that the Reserve plays in nature conservation in the Southeast. This year we hope to interest people from a different area, slightly further afield than our normal area of operations. Naturally, we hope that some of our regular supporters will also be able to join us to help spread the message deeper into Kent, where we already have some members, but we would like to gain many more by presenting a visual image of the life of the Reserve - its animals and plants - the background habitat and how it has evolved - its management and problems - and what the visitor can see:

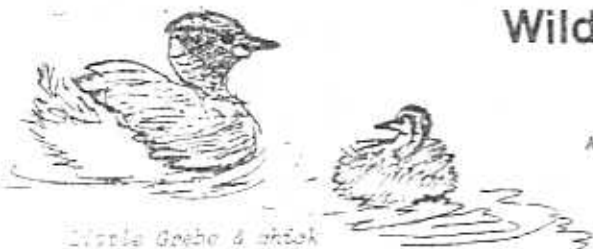
Wildlife of Rye Harbour Nature Reserve

A slide illustrated lecture with dissolving projectors and several lecturers.

Saturday, 26th October 1985, at 7.30pm
in the Leckie Hall, Southlands School, New Romney.

Further details and leaflets available nearer the time.

.....
..... END
.....



Little Grebe & chick