

# Rye Harbour Nature Reserve

## EVENTS 2012



RYE HARBOUR  
NATURE RESERVE



# Introduction

## Visiting the Nature Reserve

Rye Harbour is 1.4 miles southeast of Rye, signposted off the A259 on the Rye/Winchelsea road. There is a free car park with toilets nearby at Rye Harbour.


## Access

There is easy access around the Reserve, with five hides with wheelchair access, wheelchair friendly paths, disabled toilets in the village and many seats. Well behaved dogs are welcomed, but please keep them on a lead for the benefit of others.

## Donations please

Many events in this programme are free, but donations are appreciated.

## Children's events

Some events are aimed at children and are indicated by  in the text.

## Contact details

Rye Harbour Nature Reserve  
Lime Kiln Cottage  
Information Centre  
Rye Harbour,  
East Sussex TN31 7TU

Office: 01797 227784  
Email:  
[rhnroffice@sussexwt.org.uk](mailto:rhnroffice@sussexwt.org.uk)

This programme is delivered by Sussex Wildlife Trust staff and the Friends of Rye Harbour Nature Reserve.

## Join The FRIENDS

To help protect the wildlife and peace of this special, unspoilt place, please join the Friends of Rye Harbour Nature Reserve. You will receive regular newsletters with details of special guided walks and events. To do this, please send your details and a minimum of £5 per person to the address shown below.



## Further information

### [www.WildRye.info](http://www.WildRye.info)

To find out more about Rye Harbour Nature Reserve, including joining the Friends.

### [www.RXwildlife.org.uk](http://www.RXwildlife.org.uk)

For daily wildlife information from Hastings to Hythe, including Dungeness and Rye Harbour Nature Reserves.

### [www.RyeHarbour.net](http://www.RyeHarbour.net)

For exploring old photos of Rye Harbour village.

**Sun Jan 8th**

**10.30am – 1.30pm (2 miles)**

**Beach Reserve Circular Walk**

A closer look at winter birds with a good chance of Golden Plover and perhaps a Peregrine hunting them! Bring a packed lunch.

*Meet at Rye Harbour car park.*

*Donations appreciated.*

**Sun Jan 29th**

**10.30am – about 2pm (4 miles)**

**A Winter Ramble around Pett Level**

Come and look at wintering birds on the levels and in the reedbeds of Pett Level. Please bring your own lunch and binoculars if you have them.

*Meet at the roadside pool at Pett Level – TQ903146. Donations appreciated.*

**in focus**

*The Binocular and Telescope Specialists*

**INFOCUS** visit the Reserve regularly, providing an opportunity to try out new optical equipment under field conditions. See [www.at-infocus.co.uk](http://www.at-infocus.co.uk) for dates.

**Environment Agency**

The government agency that manages the sea defences along this coast and the Harbour of Rye.

For more info see

[www.environment-agency.gov.uk](http://www.environment-agency.gov.uk)

Like Kiln Cottage Information Centre





Mermaid's Purse

**Sat Feb 4th**  
**10am – 12noon**

**Adopt-a-Beach Litter Survey**

Help to collect and survey litter for the Marine Conservation Society's 'Beachwatch' campaign.

Meet at Rye Harbour car park.

**Mon Feb 13th**  
**12 – 3pm**

**Crafty Creations**

Drop in and do an art & craft activity based on the Reserve's wildlife.

*Drop in to Lime Kiln Cottage Information Centre between 12 and 3pm. Donations appreciated.*

**Tue Feb 14th**  
**12 – 3pm**

**C Fun Bird Activities**

Celebrate National Nestbox Week by making homes and treats for your garden birds!

*Drop in to Lime Kiln Cottage Information Centre between 12 and 3pm. Donations appreciated.*

**Wed Feb 15th**  
**10am – 12noon (2 miles)**

**C Hunt for the Missing Purse**

Join our winter hunt along the Rye Harbour shore for egg cases of sharks, skates and rays.

*Meet at Lime Kiln Cottage Information Centre. Donations appreciated.*

**Sat Feb 18th**  
**2.30pm**

**Winter Lecture:  
My Kind of Birding**

A talk by Colin Page, illustrated by a new selection of some of his best birdwatching photos.

Organised by the Friends of Rye Harbour Nature Reserve.

*Winchelsea Beach Community Hall. Open to all, donations appreciated.*

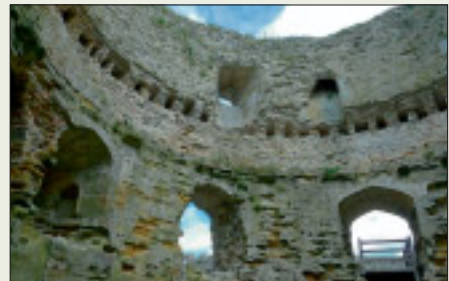
**Sun Feb 19th**  
**1 – 4pm (2.5 miles)**

**Camber Castle Wildlife and History**

A chance to go inside Camber Castle, visit the birdwatching hide at Castle Water and see the wetland wildlife there.

*Meet at Brede Lock. Donations appreciated.*

Camber Castle





Sandwich Tern

## Sat Mar 10th

10am – 1pm

### Spring Beach Clean

We should see the first Wheatears and Sandwich Terns while helping to remove the winter's rubbish. Hot soup will be served at the end. Meet at Rye Harbour car park with work gloves if you have them.

## Sat Mar 17th

7.30pm

### Winter Lecture: Extreme Mothing

An illustrated talk by Graeme Lyons, Sussex Wildlife Trust. Some of the more exciting moth-related stories Graeme and other moth-ers have experienced over the last 20 years. Organised by the Friends of Rye Harbour Nature Reserve. *Winchelsea Beach Community Hall. Open to all, donations appreciated.*

## Mon Apr 2nd

12 – 3pm

### C Paint and Plant

Drop in to the information centre and have a go at decorating a plant pot and planting some seeds to grow in it.

*Drop in to Lime Kiln Cottage Information Centre between 12 and 3pm. £2 per pot.*

## Tue Apr 3rd

10.30am – 12noon (1 mile)

### C Mud Exploration

Discover the marvellous minibeasts that live on the mudflats in our saltmarsh. Wellies/old shoes and clothes advised!

*Meet at Lime Kiln Cottage Information Centre. Donations appreciated.*

## Wed Apr 4th

11am-12.30pm (2 miles)

### C Shell Search

Explore the strandline looking for different shells and other flotsam and jetsam washed up by the sea. Bring a bucket for your finds!

*Meet at Lime Kiln Cottage Information Centre. Donations appreciated.*

Butterfly Shell



## Thu Apr 5th

2 – 4pm

### **C** Easter fun at Camber Castle

Come to Camber Castle and take part in some fun activities in and around this old ruin. Booking essential on 01797 227784.

Please note there is no vehicular access to the Castle – 1 mile walk across fields from Rye or Winchelsea Beach.

*Meet at Camber Castle. Charge £2 per child.*

## Wed Apr 11th

2 – 3.30pm (1 mile)

### **C** Minibeasts

Bring the family to hunt for minibeasts hiding from view.

*Meet at Rye Harbour car park.*

*Donations appreciated.*

## Fri Apr 13th

10am – 4pm (2 miles)

### **C** I Spy...

How many items can you spy around the Reserve on our short circular walk.

*Pick up an activity sheet from Lime Kiln Cottage Information Centre.*

*Donations appreciated.*

Whimbrel



Brown-banded Carder Bee

## Sat Apr 21st

1 – 4pm (2.5 miles)

### **Camber Castle Wildlife and History**

A chance to go inside Camber Castle, visit the birdwatching hide at Castle Water and see the wetland wildlife.

*Meet at Brede Lock. Donations appreciated.*

## Sun Apr 22nd

2 – 4pm

### **Adopt-a-Beach Litter Survey**

Help to collect and survey litter for the Marine Conservation Society's 'Beachwatch' campaign.

*Meet at Rye Harbour car park.*

## Sun Apr 29th

4.30am – 8am (3 miles)

### **Whimbrel Watch**

Enjoy the dawn chorus of gulls, terns, waders, wheatears and skylarks, and count the Whimbrel leaving their roost.

*Meet at Rye Harbour car park. Donations appreciated.*

## Mon May 7th

10am – 1pm

### New Saltmarsh Habitat Walk

Come and find out more about this exciting project and watch the sea come in on a Spring Tide. See and hear Wheatears, waders, gulls and terns.

*Meet at Rye Harbour car park.*

*Donations appreciated.*

## Sat May 12th

1 – 4pm (2.5 miles)

### Camber Castle Wildlife and History

A chance to go inside Camber Castle, visit the birdwatching hide at Castle Water and see the wetland wildlife there.

*Meet at Brede Lock. Donations appreciated.*

## Sat May 26th

2 – 4pm (2 miles)

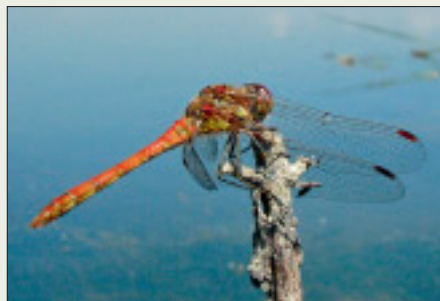
### C Childrens Birdwatching

Learn a bit more about birdwatching and come and see our breeding birds on Ternery Pool. Suitable for accompanied children aged 6-14. Booking essential on 01797 227784.

*Meet at Rye Harbour car park.*

*Charge £2 per child.*

Saltmarsh



Common Darter

## Fri Jun 1st – Sun Jun 10th

10am – 4pm

### C Bird Bingo!

Pick up a bingo card from Lime Kiln Cottage information centre and see how many birds you can see around the Reserve. You should see gulls, terns, waders and their chicks!

*Drop in to Lime Kiln Cottage Information Centre for your bingo card. £1 per card.*

## Wed Jun 6th

10 – 11.30am

### C Creepy Crawlies

Join the warden, Chris, in a hunt for spiders, bugs, flies and other minibeasts hiding from view.

*Meet at Rye Harbour car park.*

*Donations appreciated.*

## RX Wildlife Festival 2012

2nd – 10th June

There will be wildlife activities at Hastings, Pett Level, Rye Harbour, Camber, Dungeness and Romney Marsh. Most activities are free, but donations will be appreciated. More info at [www.RXwildlife.org.uk](http://www.RXwildlife.org.uk)

**Sat Jun 9th**  
**10.30am – 12.30pm (2 miles)**  
**Coastal Plants at Rye Harbour**

Find out how the Reserve's shingle plants cope with their dry, windy and salty environment! Meet at Rye Harbour car park. Donations appreciated.

**Sun Jun 10th**  
**4 – 6.30pm**  
**Breeding Birds**

Come down to the Reserve to see how our breeding terns, gulls and waders are doing this year. Meet at Rye Harbour car park. Donations appreciated.

**Sun Jun 24th**  
**8am**  
**Trapping Sharks, Tigers and Elephants!**

The warden will show you the Rye Harbour moth trap for last night's catch. Lime Kiln Cottage Information Centre. Wheelchair accessible. Donations appreciated.

Mediterranean Gull



Marsh Helleborine

**Sun Jul 8th**  
**2 – 4pm**  
**Horse Stingers and Devil's Darning Needles**

Colourful, elegant and harmless: take a close look at dragonflies and damselflies. Meet at Brede Lock. Donations appreciated.

**Sat Jul 14th**  
**10am – 12pm**  
**Adopt-a-Beach Litter Survey**

Help to collect and survey litter for the Marine Conservation Society's 'Beachwatch' campaign. Meet at Rye Harbour car park.

**Sun Jul 15th**  
**10.30am – 12.30pm (2 miles)**  
**Four Special Flowers**

Take a closer look at the Reserve's plants, finding rarities like Marsh Helleborine, Least Lettuce, Stinking Hawk's-beard and Sea Heath, but also looking at the more common flowers. Meet at Rye Harbour car park. Donations appreciated.

## Sun Jul 22nd

2 – 3.30pm

### Spiders and their Webs

Join the warden, Chris, on a hunt for a variety of different spiders, and learn how they create their webs.

*Meet at Lime Kiln Cottage Information Centre. Donations appreciated.*

## Tue Jul 24th

10.30am – 12noon

### C Glorious Mud

Come and explore the saltmarsh looking for minibeasts and crabs hiding in the mud. Wellies advisable! Booking essential on 01797 227784.

*Meet at Lime Kiln Cottage Information Centre. Charge £2 per child.*

**Camber Castle** is open to the public on the first Saturday of the month from July to September at 2pm for a guided tour. Admission £3 adults. Please check details [www.wildRye.info/reserve/cambercastle](http://www.wildRye.info/reserve/cambercastle)



## Wed Jul 25th

10 – 11.30am

### C Shrimping & Rockpooling at Pett Level

Investigate the shallow water and rockpools at low tide. Please wear suitable clothing and footwear for paddling/wading in the sea. Booking essential on 01797 227784.

*Meet at eastern entrance to Pett Level village. Charge £2 per child.*

## Thu Jul 26th

10 – 11am

### C Moths for all ages

Bring the family to learn about the moths that fly around the Reserve at night.

*Meet at Lime Kiln Cottage Information Centre. Wheelchair accessible. Donations appreciated.*

## Sun Jul 29th

10.30am – 12.30pm (2 miles)

### Beginners' Bird Watching

Learn how to identify a variety of resident and migrant birds. Binoculars and field guides available to use on the day.

*Meet at the Rye Harbour car park. Donations appreciated.*

## Mon Jul 30th

2 – 4pm (2 miles)

### C Pond Dipping at Castle Water

A walk through the Nature Reserve to Castle Water to find out what wildlife lurks amongst the reeds. Booking essential on 01797 227784.

*Meet at Brede Lock. Charge £2 per child.*



Shrimping

**Weds Aug 1st**  
**1.30 – 3pm**

**C Minibeasts**

Bring the family to hunt for minibeasts hiding from view. Booking essential on 01797 227784.

*Meet at Lime Kiln Cottage Information Centre. Charge £2 per child.*

**Fri Aug 3rd**  
**10am – 12.30pm (2 miles)**

**Brilliant Birds**

Come along and learn all about the birds that live here in the summer, and have a go at some birdy crafts. Suitable for accompanied children aged 5 and over. Booking essential on 01797 227784.

*Meet at Rye Harbour car park. Charge £3 per child.*

**Sat Aug 4th**  
**8am**

**Caught in a trap!**

A final chance to inspect the Rye Harbour moth traps.

*Meet at Lime Kiln Cottage Information Centre. Wheelchair accessible. Donations appreciated.*

**Wed Aug 8th**  
**10 – 11.30am**

**C Shrimping at Rye Harbour**

Explore the shallow sea at low tide, looking for shrimps, crabs and flatfish. Please wear suitable footwear and clothing for paddling/wading in the sea.

Booking essential on 01797 227784.

*Meet at Lime Kiln Cottage Information Centre. Charge £2 per child.*

**Thu Aug 9th**

**10am – midday (2 miles)**

**C Camber Castle for Kids**

A guided walk through the Nature Reserve to look inside Camber Castle – one of Henry VIII's fortifications. Suitable for accompanied children aged 5 and over. Booking essential on 01797 227784.

*Meet at Brede Lock. Charge £2 per child.*

**Mon Aug 13th**

**1.30 – 3.30pm (2 miles)**

**C Pond Dipping at Castle Water**

A walk through the Nature Reserve to Castle Water to find out what wildlife lurks amongst the reeds. Booking essential on 01797 227784.

*Meet at Brede Lock. Charge £2 per child.*

Marsh Frog



**Thu Aug 16th**

**10am – 1pm**

**C Crafty Creations**

Drop in to the information centre and have a go at some wildlife-themed arts & crafts.

*Drop in to Lime Kiln Cottage Information Centre. Charge £1 per item.*

**Tue Aug 21st**

**10.30am – 12 noon (1 mile)**

**C Postcards from the beach**

Come down to the beach, explore the strandline, and take home a postcard made from things you have found! Booking essential on 01797 227784.

*Meet at Lime Kiln Cottage Information Centre. Charge £2 per child.*

**Wed Aug 22nd**

**10am – 1pm (2 miles)**

**C Treasure Trail**

Ahoy me hearties! Can you follow the map and clues to find the hidden treasure? There may be a prize if you can.

*Drop in to Lime Kiln Cottage Information Centre. Charge £2 per trail sheet.*

**Fri Aug 24th**

**10.30am – 12noon (1mile)**

**C Glorious Mud**

Explore the saltmarsh looking for crabs and minibeasts hiding in the mud. Wellies advisable! Booking essential on 01797 227784.

*Meet at Lime Kiln Cottage Information Centre. Charge £2 per child.*

**Sun Aug 26th**

**12noon – 3pm (2 miles)**

## **C Camber Castle Bug Hunt and Picnic**

A family picnic in Camber Castle will precede a hunt for freshwater wildlife, from frogs and newts to leeches in Castle Water.

*Meet at Brede Lock. Donations appreciated.*

**Wed Aug 29th**

**6.30pm – dusk (2 miles)**

## **Birds, Bats and Bugs**

An evening stroll to Ternery Pool followed by a closer look at some nocturnal creatures with the help of bat detectors.

*Meet at Rye Harbour car park. Donations appreciated.*

Viper's Bugloss



**Sat Sep 8th**

**9am – 12 noon (3 miles)**

## **Autumn Migration on the Beach Reserve**

There should be movements of seabirds, coasting passerines, waders refuelling on the pools and perhaps some raptors.

*Meet at Rye Harbour car park. Donations appreciated.*

**Sat Sep 15th**

**1 – 3pm**

## **Beachwatch Big Weekend**

Join in with this national campaign to clean-up Britain's Beaches by helping out with the Rye Harbour litter survey. See [www.mcsuk.org](http://www.mcsuk.org) for further details.

*Meet at Rye Harbour car park.*

**Sun Sep 16th**

**10am – 1pm**

## **Camber Castle Wildlife and History**

A chance to go inside Camber Castle, visit the birdwatching hide at Castle Water and see the wetland wildlife there.

*Meet at Brede Lock. Donations appreciated.*

**Sat Sep 22nd**

## **RX Bird Race**

Teams of up to 5 people race to find the most bird species in the RX area in one day. A sponsored event organised by RSPCA Mallydams Wood and Rye Harbour Nature Reserve. Prizes and trophies at 7.30pm at Mallydams.

*Full details at*

*[www.RXwildlife.org.uk/rx-bird-race](http://www.RXwildlife.org.uk/rx-bird-race)*



Greenshank

**Sat Oct 13th**  
**9am – 12noon (3 miles)**

### **Autumn Migration Watch**

Join the warden in a search for warblers in the bushes, waders on the islands and wagtails overhead. *Meet at Brede Lock. Donations appreciated.*

**Sat Oct 20th**  
**2.30pm**

### **Winter Lecture: South Downs Westward from Lewes**

An illustrated talk by Patrick Coulcher, a continuation from his previous talk on the eastern section of the Downs. Organised by the Friends of Rye Harbour Nature Reserve. *Winchelsea Beach Community Hall. Open to all, donations appreciated.*

**Sat Oct 27th**  
**1 – 4pm (2 miles)**

### **Camber Castle Exploration**

Explore the Castle, the birdwatching hide and the Castle Water wetland for early winter wildlife.

*Meet at Brede Lock. Donations appreciated.*

**Tue Oct 30th**  
**1:30 – 3pm (1 mile)**

### **C Glorious Mud**

Explore the saltmarsh looking for crabs and minibeasts hiding in the mud. Wellies advisable! Booking essential on 01797 227784.

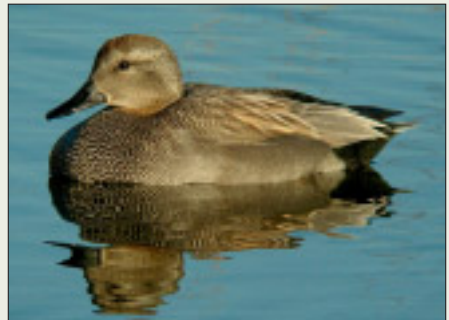
*Meet at Lime Kiln Cottage Information Centre. Charge £2 per child.*

**Wed Oct 31st**  
**10am – 1pm**

### **C Make your own Creepy Crawly**

Get creative and have a go at making scary Halloween creatures. *Drop in to Lime Kiln Cottage Information Centre any time between 10am-1pm. Charge £1 per item.*

Gadwall



# November & December

**Sat Nov 17th**

**2.30pm**

**Winter Lecture:**

**The Birds of Norfolk**

An illustrated talk by John Buckingham, organised by the Friends of Rye Harbour Nature Reserve.

*Winchelsea Beach Community Hall. Open to all, donations appreciated.*

**Sun Nov 18th**

**10.30am – 1pm (3 miles)**

**Winter Birds at the Beach Reserve**

A chance to get to grips with a good variety of winter visitors: wildfowl, waders, finches and raptors.

*Meet at Rye Harbour car park. Donations appreciated.*

**Sat Dec 1st**

**10am – 1pm**

**Festive Beach Clean**

A pre-Christmas clean-up of rubbish washed up along the beach by the autumn's storms, plus the chance to see many wintering birds. Your efforts will be rewarded with hot soup at Lime Kiln Cottage afterwards. Bring work gloves if you have them.  
*Meet at Rye Harbour car park.*

**Sussex Wildlife Trust**

...looks after other Nature Reserves and works with land owners, businesses and local communities to conserve Sussex.

Find out more at  
**[www.sussexwt.org.uk](http://www.sussexwt.org.uk)**

Wader Pool Hide



## Information

- 1** Established as a Local Nature Reserve in 1970.
- 2** It is 465ha (1149 acres) of SSSI with shingle ridges, saline lagoons, saltmarsh, reedbed, pits and grassland containing 3,720 species, including 96 Red Data Book species and 9 Red List breeding birds, including Grey Partridge, Skylark and Turtle Dove.
- 3** Nature Reserve has a Management Committee representing:
  - East Sussex County Council • Environment Agency
  - Sussex Wildlife Trust • Friends of Rye Harbour Nature Reserve
  - Private Landowners • Rother District Council
  - Icklesham Parish Council • Rye Town Council
  - Sussex Ornithological Society • RSPB
  - British Association of Shooting and Conservation
- 4** Four staff employed and part funded by Sussex Wildlife Trust.
- 5** There are five wheelchair accessible birdwatching hides with more than 9km of paths suitable for some wheelchairs.
- 6** More than 200,000 visitors a year, including over 20,000 people into information centre which was opened by volunteers for more than 2,000 hours in 2011.
- 7** Friends group established in 1973 and now has 1,920 members and contributes about £25,000 to the Nature Reserve every year.
- 8** Staff organise and guide about 100 events a year.
- 9** All this costs about £170,000 a year.
- 10** For more information visit **[www.WildRye.info](http://www.WildRye.info)**



# A guide to footpaths

